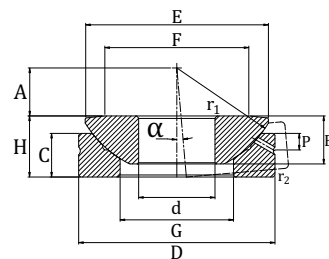


## Radial Spherical Plain Bearings



Designation														Basic Load Ratings	
	d	D	H	B	C	r1 min	r2 min	E	F	G	P	A	a (°)	Dyn. Cr. N	Stat. C0r N
SAT20	20.0	55.0	20.0	14.30	13.00	0.6	1	50.0	40.0	33.50	6.0	12.5	6°	66600	400500
SAT25	25.0	62.0	22.5	16.00	17.00	0.6	1	57.5	45.0	34.50	6.0	14.0	6°	114300	684000
SAT30	30.0	75.0	26.0	18.00	19.50	0.6	1	69.0	56.0	44.00	8.0	17.5	5°	150300	900000
SAT35	35.0	90.0	28.0	22.00	20.00	0.6	1	84.0	66.0	52.00	8.0	22.0	5°	228600	1368000
SAT40	40.0	105.0	32.0	27.00	22.00	0.6	1	98.0	78.0	59.00	9.0	24.5	5°	328500	1980000
SAT45	45.0	120.0	36.5	21.00	25.00	0.6	1	112.0	89.0	68.00	11.0	27.5	5°	427500	2574000
SAT50	50.0	130.0	42.5	33.50	32.00	0.6	1	122.5	98.0	69.00	10.0	30.0	4°	576000	3465000